

PART OF THE SE. 1/4, OF SECTION 29, T.7N., R.1W., S.L.B. & M.
MOUNTAIN MEDICAL CENTER SUBDIVISION

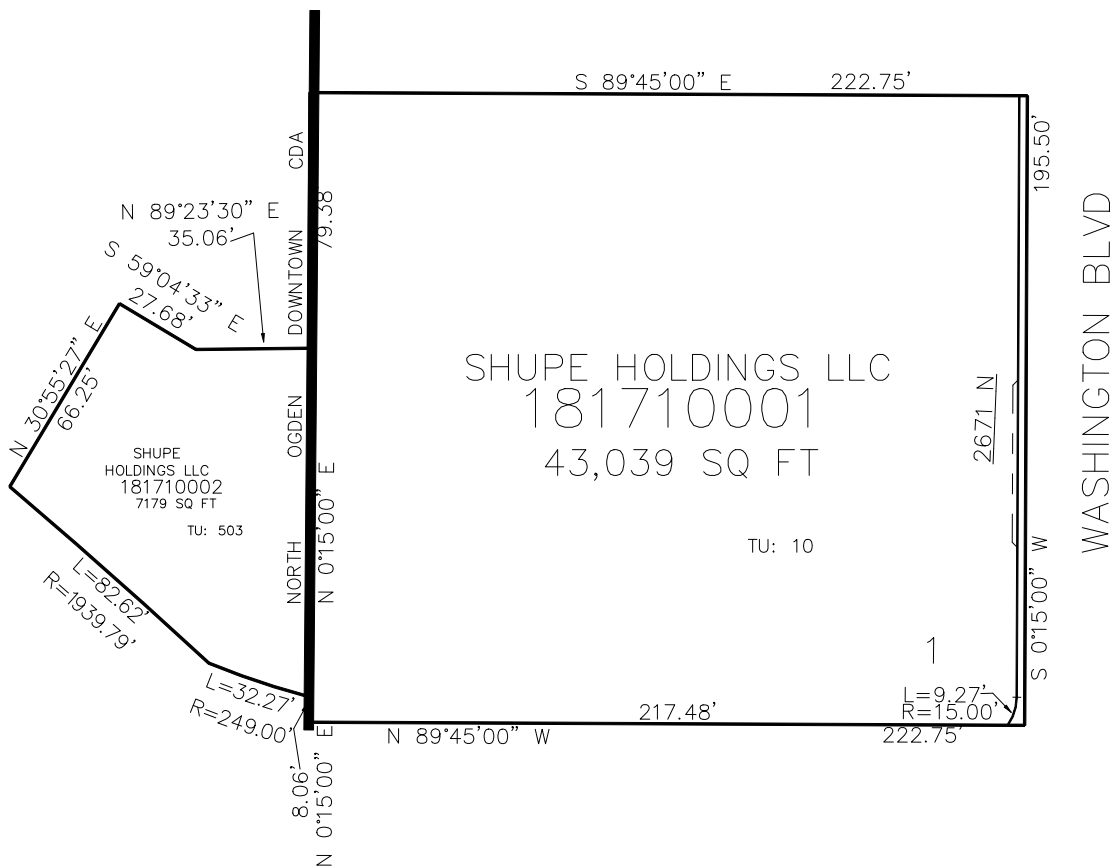
171

TAXING UNIT: 10, 503

IN NORTH OGDEN CITY

SCALE 1" = 30'

SEE PAGE 171



10' UTILITY & DRAINAGE EASEMENTS EACH
SIDE OF PROPERTY LINES AS INDICATED
BY DASHED LINES EXCEPT AS OTHERWISE
SHOWN.

FOR COMPLETE SURVEY DATA SEE
ORIGINAL DEDICATION PLAT IN
BOOK 94, PAGE 74 OF RECORDS.